

INDEPENDENCE





# 2013 Neewollah Schedule of Events

Table of Contents.....	2	Grand Parade .....	42
Neewollah Generalissimo.....	3	2012 Grand Parade Float Winners .....	43
Schedule of Events .....	4	2013 Grand Parade Marshal .....	44
Neewollah Headquarters.....	5	2013 King and Queen Doo Dah .....	44
2013 Neewollah Sponsors .....	6-7	25th Neewollah Fun Run .....	45
Young Frankenstein .....	8-19	10th Neewollah Chili Cook-Off.....	46
Queen Neelah 2012 .....	20	Medallion Hunt .....	47
2013 Queen Neelah Contest.....	21-26	Carnival .....	47
2013 Queen's Coronation Judges .....	27	Arts & Crafts Fair.....	47
2013 Queen's Coronation Entertainers .....	28	Food Vendors .....	48
2013 Queen's Emcees .....	29	Neewollah Committees .....	48-50
Queen's Committees .....	30-34	Neewollah Logo Designer .....	50
Queen Candidates Schedule of Events.....	34	2013 Neewollah Supporters .....	51
Queen Neelah Trophies & Gifts .....	35-36	Past Generalissimos, Queens & Musicals .....	52-53
Neewollah Entertainment .....	37-39	2013 Neewollah Board of Directors.....	54
Marching Band Competition.....	40	Acknowledgements/ Neewollah Info .....	54
Doo Dah Parade.....	41	2013 Bandstand Schedule .....	55
Kiddie Parade.....	41		

## Neewollah History

The Neewollah festival began in 1919 in an effort to provide positive activities for kids of all ages in place of typical Halloween pranks. Initially, the event centered around parades held morning, afternoon and night on October 31. The parades were made up primarily of decorated cars and carriages. Queens and princesses from area festivals rode in the parades, along with our own Queen Neelah, who was selected based on votes bought at a penny a piece. The Great Depression and World War II interrupted the Neewollah celebration from 1931 to 1947. Local businessmen Jim Halsey, Jerry Webb and Don Dancer revived and elaborated on the Neewollah theme, bringing it back as a three day festival in 1948. In the ensuing years, a queen's pageant, several presentations of a Broadway play, a carnival and street acts were added to the Kiddie Parade and Grand Parade. Today Neewollah is the oldest and largest annual festival in Kansas. Independence blossoms from 10,000-12,000 residents to up to 75,000 people in the final days of the now ten day festival.



# 2013 Neewollah Generalissimo



*Generalissimo  
Jeff Gettler*

Welcome to Neewollah! As the banners go up, the leaves begin to change, and the carnival rides and food stands arrive – "It's Alive" in 2013! Volunteers have been working hard to make each event a success and we are ready to show you a good time. Whether you are experiencing Neewollah for the first time, cannot remember a time without it, or have returned to share it with your loved ones, Independence is sure to be ALIVE with fun, food, and festivities for you to enjoy.

So enjoy this time with your family and friends from the first night of performances of "The New Mel Brooks Musical Young Frankenstein" to the Saturday night professional show and all the events that come in between. The time when kids get out of school early, adults take off work, and everyone stays up just a little bit too late, Independence is full of the memorable sights, sounds, and smells of Neewollah.

I am honored to be the 2013 Generalissimo and thank you for keeping Neewollah ALIVE. I hope you have a good time and enjoy!

A handwritten signature in cursive script, likely belonging to Jeff Gettler.



**"CNB&T and Banking Convenience,  
It's Alive!"**



331-3100

[www.MyBankCNB.com](http://www.MyBankCNB.com)

[www.mybankcnb.com](http://www.mybankcnb.com)

Penn at Myrtle  
Independence

NEEWOLLAH 2013



# 2013 Neewollah Schedule of Events

## Friday, October 18

7:30 p.m. Young Frankenstein, Memorial Hall

## Saturday, October 19

6 a.m. Chili Cook Off Check-In, Begin Cooking  
 7 a.m.-8:15 a.m. Neewollah 5K & 10K Registration, Riverside Park Oval  
 8 a.m.-9:30 a.m. Fun Run Registration, Riverside Park Oval  
 8:30 a.m. Start 5K/10K, Riverside Park Oval  
 10 a.m. Start Fun Run, Riverside Park Oval  
 10 a.m. Ghoulish Goodies & Terrifying Treats Dessert Contest Entry Deadline, Dessert Tent, Riverside Park Oval  
 10 a.m.-12 p.m. Great Pumpkin Decorating Station Opens & Great Pumpkin Carving Entries are accepted, Great Pumpkin Contest Tent  
 10:30 a.m. Kid's Corner Fang-tastically Fun Activities Begin (Frankenstein Walk, Haunted Hop, Witch's Cauldron Toss, & Igor's Eyeball Relay)  
 11 a.m. Chili, Salsa, & Dessert Sampling Begins, Riverside Park Oval  
 11 a.m. 5K & 10K Awards, Bandstand, Riverside Park Oval  
 12 p.m. "Eat My Brains" Contest, Bandstand, Riverside Park Oval  
 12:30 p.m. Great Pumpkin Carving Contest Awards, Bandstand, Riverside Park Oval  
 12:45 p.m. Monster Mash Coloring Contest Awards, Bandstand, Riverside Park Oval  
 1 p.m. Medallion Hunt Kick-Off, Riverside Park Oval  
 1:30 p.m. 1st Annual Oh...So Scary Salsa Competition Awards, Bandstand, Riverside Park Oval  
 1:45 p.m. Ghoulish Goodies and Terrifying Treats Dessert Contest Awards, Bandstand, Riverside Park Oval  
 2 p.m. Monster Mash Chili Bash Awards, Bandstand, Riverside Park Oval  
 7:30 p.m. Young Frankenstein, Memorial Hall

## Sunday, October 20

2 p.m. Young Frankenstein, Memorial Hall

## Monday, October 21

6:30 p.m. Queen Neelah Talent Competition, Memorial Hall

## Tuesday, October 22

7 p.m. Queen Neelah LXXII Coronation, Memorial Hall

## Wednesday, October 23

11 a.m. Food stands open downtown  
 11:30 a.m.-12:30 p.m. IHS Orchestra performs at Bandstand  
 5 p.m. Ottaway Carnival Begins  
 6 p.m. Bandstand entertainment

## Thursday, October 24

5 p.m. Ottaway Carnival Opens  
 6 p.m. Doo Dah Parade  
 7 p.m.-10:45 p.m. Bandstand entertainment

## Friday, October 25

3 p.m. Ottaway Carnival Opens  
 4 p.m. Kiddie Parade  
 5:30 p.m.-10:00 p.m. Bandstand entertainment

## Saturday, October 26

11 a.m. Neewollah Grand Parade  
 8 a.m.-6 p.m. Arts and Crafts Show, 100 block of East Myrtle  
 1:30 p.m. Marching Band Competition, Kayo Emmot Field, Schulthis Stadium  
 10 a.m.-10 p.m. Ottaway Carnival Open  
 1 p.m.-10 p.m. Bandstand entertainment



W-02 I A K K O K E E N



# 2013 Neewollah Headquarters

## Opening Day Ticket Sales

Neewollah Headquarters

September 28, 2013

8 a.m. to 12 p.m.

## Neewollah Headquarters

114 N. Penn

September 30 – October 22

Monday-Friday 9 a.m.-5:30 p.m.

Saturdays 9 a.m.-3 p.m.

Oct 23-25 9 a.m.-8 p.m.

Oct 26 9 a.m.-3 p.m.

Open every day except Sunday!

*Phone Orders are accepted by calling 1-877-NEE-WOLLAH (1-877-633-9655).*

*Your order can be charged to Discover, Mastercard or VISA credit cards.*



### Ticket Queens

**Front Row:** Liz Moore, Leseley Simpson, Leslie Coder, Angela Jones, Nancy Hignight (chair),

Amanda Bryant, Teri Durnil, Margi Swisher, Jana Shaver

**Second Row:** Sabrina Overfield, Carol Farthing, Nellie Mendoza, Toni Jabben, Jennifer Carter, Colleen Confer,

Diane Mitchell, Kristie Groff, Judy Berwager, Glenna Lawrence

**Back Row:** Melody Moore, Robyn Daniels, Lee Strobbe, Bailey Lewman, Debbie Creekmore, Carolyn Torrance,

Margaret Hoffmeister, Stacey Yakshaw, Lisa Hugo

**Not Pictured:** Gina Botts, Rickenia Botts, Ann Crow, Marla Dufur, Carolyn Follmer, Susan Kleinbeck, Cindy Latimer, Chantel Lewman, Melanie Merrick, Ginger Nelson, April Nutt, Crystal Penrod, Jackie Rash, Anne Rasnick, Liz Reynolds, Marsha Royer, Debbie Schroeder, Cheryl Sparks, Jennifer Springer, Suzy Trombold, Kelly Vining, Donna Webb, Yolunda Wright, Kim Potthast, Todd Young

# 2013 Neewollah Sponsors




# FirstOak

## BANK



*Quality* MOTORS | *Quality* TOYOTA  
FORD • LINCOLN • CHRYSLER • Dodge • Jeep • TOYOTA

# woods



*Osage*  
CASINO



*Best Beverage Sales Inc.*



**COMMUNITY  
NATIONAL  
BANK & TRUST**

*Hugo's* INDUSTRIAL  
SUPPLY

**Pioneer**  
Cellular



NEWKIRK, DENNIS & BUCKLES INSURANCE INC.

**First  
Federal**



# 2013 Neewollah Sponsors

## BRONZE PUMPKIN

**CABLE ONE**

**staff management | smx**

**CherryBerry**  
self-serve yogurt bar

*Elegance*  
on Pennsylvania Avenue

**SMP**  
Standard Motor Products, Inc

**Mercy**<sup>+</sup>  
Health for Life

**GOODY'S**  
your store. your store.

## ORANGE PUMPKIN

**MIDWEST**  
REAL ESTATE

*Family Dentistry*  
Beth Heckman D.D.S. L.L.C.

**Edward Jones**  
MAKING SENSE OF INVESTING  
Gregg S. Webster, AAMS<sup>®</sup> Jason Rutledge, AAMS<sup>®</sup>

**Mercy**<sup>+</sup>

**O'MALLEY**  
EQUIPMENT  
JOHN DEERE

**DERAILED COMMODITY**  
FLOORING & FURNITURE

**Blankinship**  
Electric LLC

*Southside Recycling*

*Independence*  
**CHAMBER**  
in Commerce

**H&R BLOCK**  
NEVER SETTLE FOR LESS  
Tom Tyler

## PURPLE PUMPKIN

**CASEY'S**  
GENERAL STORE

**Winkleman's**  
Garden Center

**BIG CHEESE**  
PIZZA

**Messengers**  
Since 1948  
Makes it Home!

**FUNSTAY**  
Power Tumbling Trampoline  
Double Mini Trampoline  
Cheer  
1001 E. 10th, Independence, MO 64050  
(816) 837-4444  
www.funstay.com

**TACO YAN**

**Commercial Bank**  
Serving Southeast Kansas Since 1874!

**Shanks Oil Company**

**Independence**  
COMMUNITY COLLEGE

**Independence**  
Heating and Air Inc.

**TIDY**  
WOMEN'S  
LAUNDROMAT  
AND DRYCLEANING

**RAINBOW**

## POLKA DOT PUMPKIN

**SHARPER**  
IMAGES

**Cynthia E. Sherwood, DDS**



**BARTA ANIMAL HOSPITAL**  
RICHARD A. BARTA, D.V.M.  
KEVIN COOPER, D.V.M.  
KATIE KLEND, D.V.M.

**Express**  
EMPLOYMENT PROFESSIONALS

**X-TREME**  
XtremelikeAndSport.com

**Potts**  
Chapel

**ATMOS**  
energy

NEEWOLLAH 2013



Neewollah Presents

THE NEW  
**MEL BROOKS**  
MUSICAL

# **YOUNG FRANKENSTEIN**

Book By **Mel Brooks and Thomas Meehan**

Music and Lyrics By **Mel Brooks**

Original Direction & Choreography by **Susan Stroman**

This musical is rated PG

**Friday, October 18 • 7:30 p.m.**  
**Saturday, October 19 • 7:30 p.m.**  
**Sunday, October 20 • 2 p.m.**

**Memorial Hall**  
**Independence, Kansas**  
[www.neewollah.com](http://www.neewollah.com)

**Directors** **Lois Lessman  
& Lisa Paige**

**Producers** **Lori Wesselowski  
& Sarah Wilson**

**Stage Manager**  
**Orchestra Conductor**  
**Choral Director**  
**Lights**

**Sound**

**Lorraine Emmot**  
**Jan Rogers**  
**JoNell Delacour**  
**Harty Blackert  
& Jinger Ferguson**  
**Sid Rutland**

Young Frankenstein is presented through special arrangement with Music Theatre International (MTI). All authorized performance materials are also supplied by MTI.  
421 West 54th Street, New York, NY 10019 Phone: 212-541-4684 • Fax: 212-397-4684 • [www.MTIShows.com](http://www.MTIShows.com)



# Directors' Notes/Synopsis

*Young Frankenstein*, officially known as *The New Mel Brooks Musical Young Frankenstein*, is a musical with a book by Mel Brooks and Thomas Meehan and music and lyrics by Brooks. It is based on the 1974 comedy film of the same name written by Brooks and Gene Wilder and directed by Brooks, who has described it as his best film. The horror film parody is based on the 1931 Universal Pictures adaptation of Mary Shelley's *Frankenstein* and its 1939 sequel, *Son of Frankenstein*. The musical hit ran on Broadway from November 2007 to January 2009.

## ACT ONE

Transylvania Heights 1934, the villagers celebrate the death Dr. Victor von Frankenstein ("The Happiest Town in Town"). Inspector Kemp ruins the fun with news of Victor's grandson Frederick, Dean of Anatomy at 'Johns, Miriam and Anthony Hopkins School of Medicine'. Frederick, ashamed to be a Frankenstein, insists he is not a madman but a scientist ("The Brain"). Frederick bids farewell to his fiancée Elizabeth Benning ("Please Don't Touch Me") and heads to Transylvania where he meets the grandson of Victor's henchman, Igor ("Together Again for the First Time"). Inga, the newly hired lab assistant, who holds a degree in Laboratory Science from the local community college, rides with them to the castle ("Roll In The Hay"). That night Frederick dreams of his ancestors ("Join The Family Business") and is able to find his grandfather's laboratory by following the mysterious housekeeper Frau Blucher's violin music ("He Was My Boyfriend").

Frederick decides to carry on experiments in the reanimation of the dead while the villagers are warned to be on the lookout for grave robbers ("The Law"). Frederick carries out the experiment and brings the creature to life ("Life, Life"). The townspeople come to investigate ("Welcome To Transylvania") while Igor, Frederick and Inga attempt to distract them ("Transylvania Mania") as Frau Blucher secretly sets the Monster free.

## ACT TWO

Everyone is out to search for the Monster ("He's Loose"). The doctor is comforted by Inga ("Listen To Your Heart") just before the unexpected arrival of Elizabeth ("Surprise"). Elsewhere, the Monster finds a blind hermit named Harold after breaking through his house wall ("Please Send Me Someone"). Frederick locks himself into a room with the newly captured Monster, overcomes his fears, and tells the creature that he is a good looking fellow ("Man About Town"). The Monster performs at the village Theatre, ("Puttin' on the Ritz") but becomes terrified when stage lights explode. He panics, runs and also kidnaps Elizabeth. Through her torment, Elizabeth sees a different side of the Monster ("Ah! Sweet Mystery of Life") and discovers true love ("Deep Love").

Luring the Monster back with music, Frederick attempts an intelligence transfer. Inspector Kemp and the villagers – believing that Elizabeth has been killed by the Monster – break into the castle to hang Frederick ("Frederick's Soliloquy"). The now articulate Monster uses his newly transferred medical skills to save Frederick. The Monster proposes to Elizabeth and Frederick announces his plans to continue the family business with Inga by his side. More comic surprises follow, and all lead to a happy ending that is sure to prove a life of laughter and love for all ("Finale Ultimo").

– Lois Lessman & Lisa Paige, Directors

## Cable ONE keeps you connected



Custom solutions for your business or home  
1-855-CABLE-ONE • [www.cableone.net](http://www.cableone.net)

**CABLE ONE**

YOUNG FRANKENSTEIN



# Cast of Characters

Frederick von Fronkensteen.....	Eric Rutherford
Igor.....	Larry Annable
Inga.....	Amy Bloomfield
Frau Blücher.....	Terri Barbera
Elizabeth Benning.....	Michelle Rutherford
The Monster.....	Jeff Shaw
Inspector Hans Kemp.....	Dean Hayse
The Hermit.....	Rich Browning*
Dr. Victor von Frankenstein.....	Dean Hayse
Ziggy.....	Dennis Doring*

\* Also in Ensemble

## Ensemble

Mr. Hilltop.....	Steve Berry	Elizabeth's Entourage	
Telegraph Boy.....	Ryan Oliver	Masha.....	Lindsay Graves
Shoe Shiner.....	Lea Shepard	Sasha.....	Lauren Emmot
Black & Decker.....	Mary Kadel, Ivory Porter	Tasha.....	Larin Tucker
		Bob.....	Drew Demo
Village quartet.....	Skye Conley, Jason Turner John Turner, Robert Weurdeman	Mad Scientists.....	John Turner, Lina Miller, Haley Hinthorn, Jason Turner
Medical Students.....	Lina Miller, Skye Conley		

## Villagers, Medical Students, Mad Scientists

Connie Blake	Dennis Doring	Beth Kelley	Jean Ann Routh	Jessica Turner
Mary Boulanger	Lauren Emmot	Lina Miller	Bailey Schaub	John Turner
Nancy Brennan	Luke Emmot	Angie Musgrove	Keith Schnug	Sherry Turner
Leslie Coder	Aldea Fenner	Ryan Oliver	Lori Shaw	Robert Weurdeman
Sarah Coder	Lindsay Graves	Pam Passauer	Lea Shepard	Zach Webb
Skye Conley	Heather Goodner	Ivory Porter	Lara Tucker	David White
Drew Demo	Haley Hinthorn	Susan Porter	Larin Tucker	Richard Wiltse
Shelby Demo	Hannah Jackson	Amy Reid	Brison Turner	
Chris Doring	Mary Kadel	Tiffany Roth	Jason Turner	

**Quality** MOTORS

You Can Count On Us!

FORD • LINCOLN • CHRYSLER • Dodge • RAM • Jeep

**2022 W. Main • Independence**

(620) 331-6090 • Toll Free 1-800-526-1814

www.qualitymotors.com

**Quality**  
TOYOTA

TOYOTA leading the way. every day.

(620) 331-8310 • Toll Free 1-877-381-8310

www.quality-toyota.com

**2101 W. Main  
Independence**



23 YEAR RECIPIENT

YOUNG FRANKENSTEIN



# Scenes & Musical Numbers

## ACT ONE

Prelude	.....	Orchestra
Scene 1:	Transylvania Village Square	
	"The Happiest Town in Town" .....	Herald, Ziggy, Villagers, Ziggettes
Scene 2:	Lecture Hall in "Johns, Miriam & Anthony Hopkins School of Medicine" USA	
	"(There is Nothing Like) The Brain" .....	Frederick, Medical Students
Scene 3:	New York Station	
	"Please Don't Touch Me" .....	Elizabeth, Passengers
Scene 4:	Transylvania Station	
	"Together Again for the First Time" .....	Igor, Frederick
Scene 5:	Transylvania Forest	
	"Roll in the Hay" .....	Inga, Frederick, Igor
Scene 6:	Outside the Castle	
Scene 7:	Castle Main Hall	
	"Join the Family Business" .....	Victor, Mordecai, Mad Scientists
Scene 8:	The Secret Lab	
	"He Vas My Boyfriend" .....	Frau Blucher
	"The Brain" (reprise) .....	Frederick
Scene 9:	Transylvania Village Square	
	"The Law" .....	Kemp, Villagers
Scene 10:	The New Secret Lab	
	"Life, Life" .....	Frederick, Inga, Igor, Frau Blucher
	"He Vas My Boyfriend" (reprise) .....	Frau Blucher
Scene 11:	Outside the Castle	
	"Welcome to Transylvania" .....	Quartet, Kemp
	"Transylvania Mania" .....	Igor, Inga, Frederick, Monster, Villagers

## ACT TWO

Entr'acte	.....	Orchestra
Scene 1:	Transylvania Forest	
	"He's Loose" .....	Kemp, Villagers
Scene 2:	The Lab	
	"Listen to Your Heart" .....	Inga
	"Surprise" .....	Elizabeth, Igor, Frau Blucher, Entourage
Scene 3:	Cottage in the Forest	
	"Please Send Me Someone" .....	Hermit
Scene 4:	The Dungeon	
	"Man About Town" .....	Frederick
Scene 5:	Loew's Transylvania Heights Theatre	
	"Puttin' On The Ritz" .....	Frederick, Monster, Inga, Igor
Scene 6:	Outside a Cave in the Transylvania Forest	
	"Ah Sweet Mystery of Life" .....	Elizabeth
	"Deep Love" .....	Elizabeth
Scene 7:	The Lab	
	"Brain Transference" .....	Orchestra
	"Hang the Doctor" .....	Kemp, Villagers
Scene 8:	Transylvania Village Square	
	"Frederick's Soliloquy" .....	Frederick
	"Deep Love" (reprise) .....	Monster
	Final Sing .....	Company



# Starring Roles

## Eric Rutherford as Fredrick von Fronkensteen

John Eric Rutherford, tenor, is currently the music professor at Independence Community College. He holds a bachelor's degree from Otterbein College, a master's degree from Northwestern University, and is a current doctoral degree student at the University of Washington. He has over 10 years of teaching experience in vocal and instrumental music at all levels. Eric is also an avid performer. He has appeared in Mozart's *Così fan tutte* as Ferrando, Smetana's *The Bartered Bride* as Jeník, Piccinni's *La Bouna Figliuola* as Il Marchese, and Britten's *Midsummer Nights Dream* as Lysander. His concert works include performances of Schubert's *Mass in G*, Bach's 21st *Cantata*, Rossini's *Stabat Mater*, Vivaldi's *Dixit Dominus*, Mozart's *C Minor Mass*, and Handel's *Joshua*. Eric has experience in numerous operatic scenes and also sung in several master classes, including a class with Renee Fleming in 2008. He has also been a featured soloist in many concerts and performances at a variety of venues including Door County Music Festival, Puget Sound Opera, Piccini Theatre in Bari Italy, Seattle Opera, Elmhurst Symphony, Columbus Opera Theatre.

Eric is a member of First United Methodist Church. Eric and his wife, Michelle, have two children, Rachel and Ryan.



## Larry Annable as Igor

Larry Annable is the Choral Music Director at Independence High School where he conducts the Indy Ensemble, Concert Choir, Mixed Chorus, serves as Musical Director for the all-school musical, and teaches Music Theory and Music Appreciation classes. Ensembles under his leadership have consistently received 1 ratings at the State Music Contests. Larry is currently in his thirty-seventh year of teaching Choral Music, while spending the last thirteen years at Independence High School.

Larry has received such honors as Kansas Federation of Music Club's Educator of the Year, KMEA Southeast Kansas Secondary High School Music Educator of the Year, and The Master Teacher Award for INEA.

For many years Larry has been seen performing in musical productions for Neewollah here in Independence. He has performed the lead roles in many Neewollah productions and has also served on several Neewollah committees.

Larry is married to Sandy and together they have two grown children, Stephanie Tibbetts and Bryan Mayes. They have two granddaughters. Larry is a member of the First Presbyterian Church of Independence where he serves as co-director of the choir.

## Amy Bloomfield as Inga

Amy Bloomfield is married to Shawn, and they have three wonderful children, Madison, Cal and Mallory. She is a first grade teacher at Eisenhower Elementary School.

Amy has participated in the Neewollah musicals "Joseph and the Amazing Technicolor Dreamcoat", and "Thoroughly Modern Millie". She has also shared her love of musical theater by sharing her talents with Independence Children's Summer Theater where she serves on the Board of Directors. She was also the producer for the ICST musicals "The Jungle Book" and "Sleeping Beauty".

Bloomfield serves on the William Inge Festival Steering Committee and has chaired several other committees for the annual festival.



## Care where you are. Mercy Clinic



Carlos Venegas, ARNP  
Family Nurse Practitioner

**Mercy**  
mercy.net

### Mercy Convenient Care

For life's minor emergencies  
800 W. Laurel • Independence  
(620) 332-5880  
Mon.-Fri. 5 p.m. to 10 p.m.  
Sat. 10 a.m. to 10 p.m.

**Mercy Clinic Primary Care**  
Family Medicine • Pediatrics • Orthopedics  
Internal Medicine  
800 W. Laurel, Independence  
620-332-3280



Julie Martin, MD  
Family Medicine Physician



# Starring Roles

## Terri Barbera as Frau Blücher

Terri Barbera is from Fredonia, Kansas, but has called Independence her home since 1993. After meeting her husband Fuzzy Barbera, Terri began performing with him as a front singer which led to performing jazz, R&B, blues, gospel and some country. She performs annually for the William Inge Theater celebrations, sings for benefits/fundraisers, and sings in area singing competitions, as well as many other musical involvements. Barbera performs regularly with "Doc Fuzz & the Antidotes", and fronts the jazz combo "Plush". Terri stretched her wings a little further and auditioned for two movies, one in Kansas City and in Oklahoma. Terri is locally employed at Cessna and shares her talents of charm and charisma with visitors in the Customer Delivery Department.

Terri is associated with Delta Psi Omega, ITSO (Independence Theater Society Organization), Chance Film Productions, Montgomery County Theater Society, Neewollah, B3 Productions, and Blue Fuzz. She was awarded ICC Best Actress Award, Lloyd Mordy Award, third place Downstream Idol Competition, runner-up Four State Idol Competition Finals, and professionally sings the National Anthem.



## Michelle Rutherford as Elizabeth Benning

Michelle Rutherford is a music professor at Independence Community College. She holds a bachelor's degree in music from Otterbein College and has a master's in music from Kansas State University. She has maintained a private piano studio for 10 years. Michelle also has teaching experience in vocal and instrumental music in the public school classroom. She has accompanied for student juries at Northwestern University, high school and college vocal concerts and musicals, and instrumental and vocalists in various competitions. Michelle has served as a church pianist and organist throughout her career. She has directed the music for musical theater productions such as the Neewollah production of "Willy Wonka." Michelle has appeared in roles in college and community musical theater and opera productions.

She is a member of First United Methodist Church where she is involved in music and teaches Sunday School.

Michelle and her husband Eric have two children, Rachel and Ryan.



## Jeff Shaw as The Monster

After taking a couple of years off to work on sets, Jeff Shaw is making his monstrous return for his 15th Neewollah musical. Jeff has participated in ICC productions, Montgomery County Theater productions, and the Inge Festival. Jeff is a member of the First Presbyterian Church and President of the Independence Thespian Society Organization. Jeff lives in Independence with his wife, Lori. They are the parents of three grown children and proud grandparents. Jeff is a Signal Maintainer with Union Pacific Railroad.



## Dean Hayse as Inspector Hans Kemp and Dr. Victor von Frankenstein

Versatile Neewollah veteran Dean Hayse returns to the stage this year in the dual roles of Inspector Kemp and Victor Frankenstein. Patrons may remember him from his previous performances as Willy Wonka in "Willy Wonka and the Chocolate Factory", Harold Hill in "The Music Man", Pharaoh in "Joseph and the Amazing Technicolor Dreamcoat", The Beast in "Beauty and the Beast", and Tin Man in "The Wizard of Oz". Dean has performed at the William Inge Festival several times, recently appearing as Will Masters in the William Inge classic "Bus Stop". Dean wants to say thank you to his wife, Jodi, and his children for being so gracious and accepting of the time away during rehearsals. Dean is an engineer at Cessna Aircraft Company.





# Featuring



**Rich Browning as The Hermit**



**Village Quartet**

**Front Row:** Skye Conley, Robert Weurdeman  
**Back Row:** John Turner, Jason Turner



**Featured Chorus**

**Front Row:** Dennis Doring as Ziggy, Steve Berry as Mr. Hilltop  
**Back Row:** Mary Kadel as Black, Lea Shepard as Shoe Shiner,  
Ivory Porter as Decker  
**Not Pictured:** Ryan Oliver as Telegraph Boy



**Elizabeth's Entourage**

**Front Row:** Kayla Pothast as Basha, Lauren Emmot as Sasha  
**Back Row:** Larin Tucker as Tasha, Drew Demo as Bob,  
Lindsay Graves as Masha

**GOODY'S**  
your town. your store.



[goodysonline.com](http://goodysonline.com)  
shop online 24/7



**we're simply electrified  
to be a sponsor of the  
2013 Neewollah Festival!**

It's no trick... your friends at Goody's are proud to be a part of Kansas' largest annual celebration. After all the fun, come check out our hauntingly hot fall styles and enjoy spook-tacular savings storewide! Valid October 26-November 3, 2013. \*Restrictions apply; see website for details.

here's a treat!  
**25% off**  
your next  
online purchase\*  
with code 1018



# Featuring



## Featured Chorus

**Front Row:** Lori Shaw, Mary Boulanger, Heather Goodner  
**Back Row:** Lina Miller, Pam Passauer, Haley Hinthorn



## Villagers, Medical Students, Mad Scientists (Group 2)

**Front Row:** Sarah Coder, Shelby Demo, Leslie Coder, Amy Reid  
**Back Row:** Bailey Schaub, Keith Schnug, David White, Zach Webb, Kimberly Bryant

**Not Pictured:** Brison Turner, Richard Wiltse



## Villagers, Medical Students, Mad Scientists (Group 1)

**Front Row:** Angie Musgrove, Connie Blake, Tiffany Roth, Beth Kelley, Jessica Turner  
**Second Row:** Aldea Fenner, Nancy Brennan, Chris Doring, Sherry Turner  
**Back Row:** Jean Ann Routh, Susan Porter, Luke Emmot, Lara Tucker, Hannah Jackson

YOUNG FRANKENSTEIN

# 33rd Annual William Inge Theatre Festival

The Official State Theatre Festival of Kansas  
 March 26-29, 2014

Honoring Arthur Kopit with the  
 Distinguished Achievement in the American Theatre Award

**Independence**  
 COMMUNITY COLLEGE

[www.ingecenter.com/facebook](http://www.ingecenter.com/facebook)  
 (620) 331-7768 • [www.ingecenter.org](http://www.ingecenter.org)





# Musical Staff



## Orchestra

**Front Row:** Don Farthing, Rebecca Timmons, Jerri Haymaker, Faye Millen, Judy Jones, Glenda Winkleman  
**Back Row:** Bridget Carson, Henry Millen, Sandy Jewers, Terry Harper, Jayme McClain, Jan Rogers (Conductor)  
**Not pictured:** Mark Dice, Jami Messner, Bruce Brooks, Charlie Simmons



## Rehearsal Accompanist & Stage Manager

Glenda Winkleman (rehearsal accompanist),  
 Lorraine Emmot (stage manager)



## Conductor

Jan Rogers

**Choral Director**  
**Not Pictured:**  
 JoNeil Delacour

visual arts • music • theatre • literature • performing arts



World class art. Small town hospitality.  
 July 3-13, 2014  
 Independence, Kansas

[www.astrafest.org](http://www.astrafest.org)



# Production Staff

## Lori Wesselowski - Co-Producer

Lori Wesselowski has lived in Independence for the last 20 years. She is married to Barry and has three children - Erin, Alex and Anna. Lori is an active member of the First United Methodist Church and is involved in several civic organizations including PEO and Junior Child Study Club. She was recently elected to the Independence School Board. She is on the First Leadership Board and has been a consultant for the Entrepreneurship/Junior Achievement class at the high school. Wesselowski has been on several Neewollah committees and was recently elected to the Neewollah Board. She is also very active with the Independence Children's Summer Theater program and serves as board president. She has chaired several committees and has produced their productions for the last three years. "Young Frankenstein" is her first opportunity to produce a Neewollah production.

## Sarah Wilson - Co-Producer

Also undertaking her first Neewollah musical producer role is Sarah Wilson. Sarah is a special education instructor at Cherryvale High School. She is involved in community activities including PEO, Chapter EF, FORPAZ, Independence Summer Theatre, and Neewollah, as she has served on queen's talent and several other committees. Wilson is also an active member at the First Presbyterian Church, where she serves on the Christian Education committee and has chaired Vacation Bible School. She and her husband John, have two children, Sam and Emily. They reside in Independence.

## Lisa Paige - Co-Director

Lisa Paige is originally from Emporia, Kansas. She graduated from Emporia State University with a Bachelor's degree in Elementary Education and a Master's degree in Educational Administration. Lisa has participated in Neewollah since 1990, directing 9 productions, choreographing 5, acting in a leading role in 8 and producing 1 show. Lisa has also been the Queens Pageant director, the Talent Show chair, the Neelah Deb chair and the Neewollah website co-chair. Lisa was selected to join the Neewollah Board in 2009 and will serve as Generalissimo in 2014. Lisa is the assistant principal at Eisenhower Elementary School. Lisa heads the Independence Children's Summer Theatre, which she founded in 2005 and serves as the Artistic Director. Lisa has served on the William Inge Festival Steering Committee and the Memorial Hall Task Force. She is currently serving on the ASTRA Festival Board and as an Elder of the First Presbyterian Church. Lisa and her husband Mark live on a ranch south of Dearing. They have one son, Jaxon.

## Lois Lessman - Co-Director

A veteran actor on the Neewollah stage, "Young Frankenstein" will be the first time for Lois Lessman to take on the fall musical from behind the scenes. Lois is a native of Independence and worked in radio and journalism before joining the college for a twenty year stint in development, public relations and human resources. In addition to 19 Neewollah shows, she has appeared in numerous Independence Community College, Inge Festival and community theater productions. She is active in the Montgomery County Theater group. Her favorite plays, to date, include "Picnic", "Annie", "Thoroughly Modern Millie", "Love Letters", and "Extra Ketchup, Hot Flashes and Rum".



# Musical Committees



## Musical Sets

**Front Row:** Billie Strickland, Travis Kolb, Dustin Cain  
**Second Row:** Drew Demo, Andrew Demo, Brett Shaw,  
 Shawn Wallis, Trevor Bruening  
**Back Row:** Teresa Fairbanks, Geoffrey Corle, David Bryant,  
 Mark Coder, Jinger Ferguson (co-chair)  
**Not Pictured:** Hardy Blackert (co-chair), Jake Jabben,  
 Ashley Drake, Judy Berwager



## Musical Lighting Design

**Front Row:** Travis Kolb, Jinger Ferguson (chair), David Bryant  
**Not Pictured:** Hardy Blackert



**Musical Publicity**  
 Sandy Annable

**Musical Sound Engineer**  
 Sid Rutland



## Musical Props

**Front Row:** Lauren Lester, Pam Ysusi, Linda Payne  
**Back Row:** Stacey Yakshaw, Lisa Hugo (co-chair),  
 Michelle Stichter (co-chair), Stacey Near

**Express<sup>SM</sup>**  
 EMPLOYMENT PROFESSIONALS

**Local Service. International Resources.**

Hiring the area's top talent for your team:

- Maximize your productivity • Minimize your turnover
- Increase your profitability

**Mark & Kym Kays, Owners**

2009 N. Penn Ave. • Independence • 620-331-6200

PO Box 1084  
 INDEPENDENCE, KS  
 67301



Main Office  
 620-647-8177  
 620-647-8188 fax

**M.J. Murphy, LLC**

Fuel Jobber, Farm Delivery, Transport Load  
**MICHAEL MURPHY**

620-249-4335 cell  
 mjmurphymike@hotmail.com

Moline  
 800-647-3585

Sedan  
 620-249-0561

El Dorado  
 316-321-6610

Independence  
 620-331-3377



# Musical Committees



## Musical Costumes

**Front Row:** Nancy Brennan, Leslie Coder (co-chair), Sarah Coder  
**Back Row:** Mary Thompson-O'Rourke (co-chair), Jannette Luthi, Angie Musgrove



## Musical Cast Party

**Front Row:** Shelley Brooks, Patti Blex  
**Back Row:** Judy Crumrine (chair), Janet Demo, Liz Moore  
**Not Pictured:** Sheri Hesse



## Musical Hair

**Front Row:** Becky Miessler (co-chair), Chelly Hoobler (co-chair)  
**Second Row:** Chelsea Lumm, Erin Connors, Jennifer Bright, Shelly James, Jordan Hoobler, Tawna Golightley, Joann Connors  
**Back Row:** Genevieve Ratzlaff



## Musical Makeup

**Front Row:** Kelly Cox, Lindsay Shaw  
**Back Row:** Dee Webb, Zach Webb, Meagan Moore  
**Not Pictured:** Callie Hagood (chair), Jeremy Palmer, Amy Easley, Tabitha Easley

**RSI**  
**Remediation Services Inc.**

Environmental Services

2735 S. 10th • Independence • (620) 331-1200



**WOODS LUMBER CO.**  
 915 N. Penn • Independence  
 (620) 331-4900

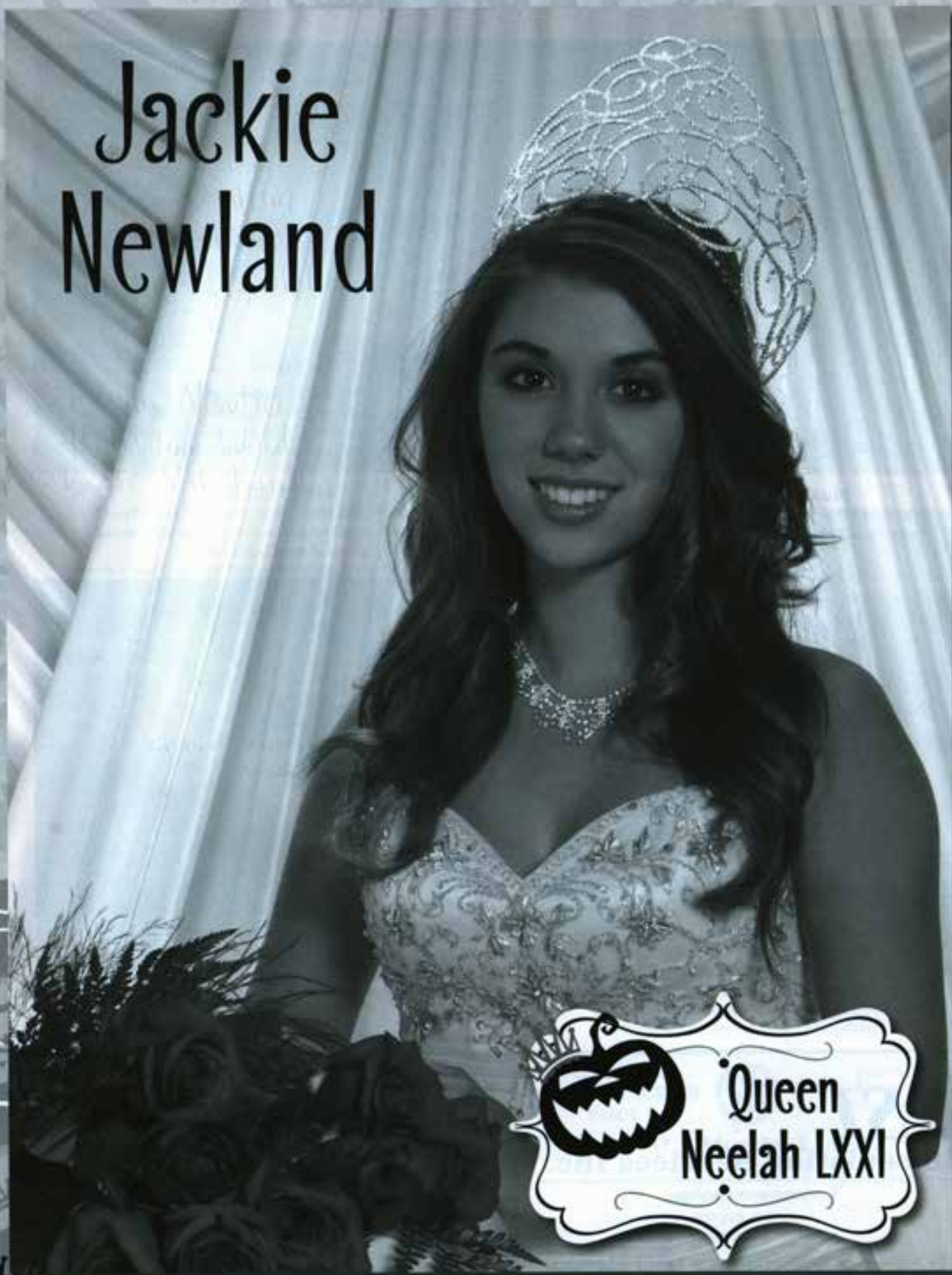
## INDEPENDENCE READY-MIX

Office located at Woods Lumber  
 Batch Plant 920 N. 10th • Independence  
 (620) 331-4150

YOUNG FRANKENSTEIN



# Jackie Newland







**The Queen's Court:** (Pictured left to right)

Ashlyn Connor, Miss Photogenic; Kelsey Sheehart, Miss Beauty; Taylor Unack, Miss Fashion; Whitley Corth, Miss Poise; Abbie Werkelman, 2nd Runner Up & Miss Congeniality; Jackie Newland, Queen Neelah LXXII; Charles Holsinger, 1st Runner Up; Cole Wonnaford, Miss Talent; Kaito, Miss Interview; Kylie Quinn, Miss Personality; Monique Shaw, Miss Originality.

## Judging Queen Neelah LXXII

Queen Neelah candidates are evaluated by a panel of judges over a period of three days. As a means of introduction, each candidate presents an individual biography which gives personal background, interests, and her reason for entering the pageant. Miss Originality is chosen in part from the most original and imaginative biography. Candidates are also required to submit a portrait from which Miss Photogenic is selected.

The first opportunity for the judges to meet the candidates is the Queen's Tea held Sunday, October 20. The judges hold a private interview with each candidate on Monday, October 21. That same evening, each candidate presents a three-minute talent presentation. Miss Talent is chosen from the most polished and entertaining of the talent numbers. On Tuesday, October 22, a brunch is held where the candidates have a final opportunity to meet with the judges in an informal setting prior to the coronation. Over the course of time spent with

the candidates, the judges also evaluate each young woman's poise, personality, personal fashion sense, and beauty. The candidates themselves select Miss Congeniality.

### Point System for Judging Queen Neelah LXXII

Poise .....	15 points
Interview .....	20 points
Talent .....	20 points
Personality .....	15 points
Originality .....	10 points
Beauty .....	5 points
Fashion .....	5 points
Photogenic .....	5 points
Judges' Evaluation .....	5 points
<b>TOTAL .....</b>	<b>100 points</b>



## Looking for a clever, but professional, way to promote your business?

Grass Roots Design Group can help.  
Specializing in graphic design, printing, screen printed & embroidered apparel, advertising specialties and more.

**Grass Roots Design Group • 110 W. Main  
Independence, KS • 620-331-5040**

Thanks to  
Neewollah for  
trusting Grass Roots  
Design Group to  
design and print  
this year's posters,  
programs & retail  
merchandise.



# 2013 Coronation Program

Opening Presentation of Queen LXXII Candidates

Presentation of Candidates 1-8

Selected Talent Presentations

1. Kristen Dunham
2. Jenna Gilstrap
3. Christine Loganbill

Presentation of Candidates 9-16

Selected Talent Presentations

1. Emily Newton
2. Randalin Ward
3. Beth Yakshaw

Presentation of Candidates 17-22

Neelah Deb Dance

## Intermission

Farewell of Queen Neelah LXXI Jackie Newland

Announcement of Category Winners

- Miss Originality Brooke Murdy
- Miss Interview Biona Mendoza
- Miss Congeniality Kasi Dee Cox
- Miss Photogenic Emily Newton
- Miss Fashion Chyonna Farmer
- Miss Beauty Beth Yakshaw
- Miss Personality Trinity Coats
- Miss Poise Mandi Schwenker
- Miss Talent Randalin Ward

Announcement of Finalists

- 2nd Runner-up Jenna Gilstrap
- 1st Runner-up Dalice Coda

Crowning of Queen Neelah LXXXI Kasi Dee Cox







**Rebecca Brennan**  
R & S Studio  
Lyrical Dance



**Dalice Coda**  
Southside Recycling  
Dalice Coda



**Trinity Coots**  
First Neodesha Bank  
Skit



Candidates • Candidates • Candidates



**Queen  
Neelah LXXII**

Candidates • Candidates • Candidates



**KasiDee Cox**  
Midwest Real Estate  
Tap Dance



**Cheyenne Delano**  
Standard Motor  
Products, Inc.  
Flute Solo



**Kristen Dunham**  
The Neodesha Derrick  
Saxophone Solo







**Betty Grace Fairbank**  
Dr. Gary Beaver  
Classical Point Dance



**Chynna Farmer**  
Plumb Crazy Plumbing  
Vocal Solo



**Jenna Gilstrap**  
 Twig's Floral & Gifts  
 Hip Hop Dance



Candidates • Candidates • Candidates • Queen Neelah LXXII • Candidates • Candidates • Candidates



**Anna Hignight**  
Mercy Physician Group  
Original Skit



**Christine Loganbill**  
Community National  
Bank & Trust  
Hip Hop Dance



**Zoe McCollam**  
Café Rosarita  
Instrumental Solo





**Diona Mendoza**  
Hugo's Industrial Supply  
Cultural Dance



**Brooke Mundy**  
Quality Motors  
Dance



**Emily Newton**  
Kesler Photography  
Original Skit



Candidates • Candidates • Candidates



**Queen  
Neelah LXXII**

Candidates • Candidates • Candidates



**Tayler Reichenberger**  
Reichenberger Farms  
Evolution of Dance



**Riley Sanders**  
Independence  
Heating & Air  
Hip Hop Dance



**Mandi Schwenker**  
Yerkes & Michels  
Dance





**Danni Shay**  
Drs. Morris & Hill  
Medical, LLC  
Dance



**Randalin Ward**  
Ane Mac's  
Piano Solo



Candidates • Candidates • Candidates • Queen Neelah LXXII • Candidates • Candidates • Candidates



**Tyra Welch**  
Burnett Builders  
Humorous Skit



**Beth Yakshaw**  
Bill Fitzpatrick  
Attorney at Law  
Skit





**Kristi Murphy** comes to us from Broken Arrow, Oklahoma, where she resides with her husband Steve. She is the mother of Ashley and Chris and has four beautiful grandchildren. She has been a stylist in Tulsa for over 25 years and is no stranger to the pageant world. She has judged and coached as far back as 1995. She enjoys spending time with her grandkids and at the lake with her husband.



**Michelle Kostas**, a long time volunteer of the Miss Oklahoma Pageant, comes from Tulsa, Oklahoma. She has assisted with hair and make up as well as coaching interview and modeling for new and veteran contestants in the Miss Oklahoma and Miss Oklahoma Outstanding Teen Program for over 20 years. She has been a stylist in Tulsa for the past 24 years. In her spare time she is an active board member of the Tulsa chapter of Juvenile Diabetes Association as well as the Tulsa Area Safe Kids Coalition. She is the mother of one child, an 11 year old daughter, who is the current reigning Miss Oklahoma JR High America.



**Robert G. Thompson** of Davenport, Oklahoma, was educated at the University of Oklahoma, served in the U.S Air Force Reserve for six years and has been married to his high school sweetheart Janine for forty-one years. Together they have five children, the youngest of whom is Miss Oklahoma 2011 and First Runner Up to Miss America 2012, Betty Thompson-Richey. They also have six granddaughters and two grandsons.

Robert served as the Minister of Music for the First Baptist Church of Davenport, Oklahoma, for 14 years and recently retired from the ATC Freightliner group where he worked for 35 years as the General Manager for Parts Operations.

Robert loves college football, Oklahoma City Thunder basketball, Irish Dancing and watching whatever his grand kids are doing at the time. He volunteers annually with Rebuilding Together in Oklahoma City and has been involved in fundraising for the Regional Food Bank of Oklahoma and CMN for several years.

1300 W. Oak • Independence  
(620) 331-1000



**Welcomes you to  
Neewollah!**

**Standard Motor Products**





## Neelah Debs

**Front Row:** Kaylee Bryant, Courtlynn Rose, Hope Renfro, Taylor Dufur, Sarah Brennan, Maddy O'Rourke

**Back Row:** Emily Depew, Kennedy Froebe, Mackenzie Strycker, Anna Miller, Carsyn Bryant, Courtney Day

### Stage Escorts

**Front Row:** Keenan Nutt, Logan Taylor

**Back Row:** Cody Sears, Ty Schabel, Chase Null, Clay Sears



**John Hamlin – Coronation Music**

Neewollah is privileged to welcome back John Hamlin to perform as background artist for this year's Queen's Coronation. John's wide range of playing styles and compositions include Blues/Alternative Bluegrass and Classical/Spanish and Jazz. Today John performs, arranges, publishes, distributes and markets his music full time throughout the world, including time spent entertaining in his home state of Kansas. John lives here in his hometown of Independence with his wife and son. Currently John serves on the Music Faculty at Independence Community College teaching Classical and Spanish guitar since August 2000. In 2007, John became a new member of the Kansas Arts Commission and The Tulsa Guitar Society. John also operates his own guitar studio and has studied under the direction of Maestro David Smart and Mentor Edgar Cruz. John also had the pleasure of studying with Maestro Hector Garcia and Mike Millard where he acquired his Classical Guitar skills at Oklahoma City University.











# Queen's • Queen's • Queen's • Queen's



## Data Workshop Committee

Laura McClure (chair), Emmi Knight, Gayle Chapman



## Queen's Brunch Committee

Becky Thorenson (co-chair),  
Becky Lanning (co-chair)



## Pop Party Committee

Front Row: Ashley Moore (co-chair), Lori Wesselowski  
Back Row: Melody Moore (co-chair), Stephanie Julian



## Transportation Committee

Michelle Smith (co-chair), Hannah Yanez (co-chair)

**\$1 OFF** any Chicken Strip Basket

Valid only at DQ Grill & Chill restaurants. Offer good on regular price. Not valid on other offers and promotions. See us for details. Offer good on regular price. Not valid on other offers and promotions. See us for details. Offer good on regular price. Not valid on other offers and promotions. See us for details.

## INDEPENDENCE ANIMAL HOSPITAL

EDWARD L. EPP, DVM  
KATHI BOLTON, DVM

LARGE & SMALL ANIMAL SERVICES  
MEDICINE & SURGERY • IN-OFFICE TESTING

MON-FRI 7:30 AM - 5:30 PM  
SAT 8 AM - 12 PM

2403 W. MAIN ST., INDEPENDENCE  
620-331-3740  
800-931-3740

[WWW.INDEPENDENCEANIMALHOSPITAL.COM](http://WWW.INDEPENDENCEANIMALHOSPITAL.COM)







### Queen's Sound

Jason R. Curtis



**Not Pictured:** Lauren Lester,  
Jamie Dewitt



# VT Hackney

A company of VT Systems



**620.331.6600**

**300 Hackney Avenue ~ Independence, KS**



# JEFF KING

**15th District – Kansas Senate**













## Trophy Donors 2013

**Queen Neelah..... Elegance on Pennsylvania Avenue**  
**1st Runner Up..... Quality Motors/Quality Toyota**  
**2nd Runner Up..... Coldwell Banker Pasternak & Johnson**  
**Miss Poise ..... Tidy Whities Laundromat & Dry Cleaning**  
**Miss Beauty ..... O'Malley Equipment**  
**Miss Fashion..... Independence Animal Hospital**  
**Miss Talent.....CableOne**  
**Miss Originality..... Sharper Images**  
**Miss Interview..... Studio 4**  
**Miss Photogenic .....Dr. Jennifer Beurskens, DDS**  
**Miss Personality .....Melissa and Duane Small**  
**Miss Congeniality .....Mercy Hospital**



**CORNERSTONE**  
REGIONAL SURVEYING, INC.

A Full Service Land Surveying Company

1921 N. Penn Phone 620.331.6767  
Independence, KS 67301 Fax 620.331.6776  
mail@cornerstoneregionalsurveying.com

# SCHMIDT

ATTORNEY GENERAL 

**WWW.DEREKSCHMIDT.ORG • CONSUMER HOTLINE: 800-432-2310**

Page 404 by Stewart and Armstrong-Gibson, Inc. • Gary C. Armstrong, CPA, Treasurer



Offering the building blocks and experience people need today, for tomorrow's opportunities...

We proudly support  
the fun and  
excitement of

Neewollah

# Independence

Quality  
education at a  
fraction of the cost

For more information call 820-331-4100 online [www.indycc.edu](http://www.indycc.edu) or visit campus





## Queen Neelah Pageant Gifts & Sponsors

**All Candidates:**

A Sterling Silver Charm Bracelet, a t-shirt, an Independence Community College Scholarship (up to 18 hours) including books, monogrammed canvas tote, snacks & meals during rehearsals.

**Candidates Gifts Provided By:**

Independence Community College, Earth Care Products, First American Title, Elegance on Pennsylvania Avenue, Standard Motors, Cornerstone Surveying, Dairy Queen, Sonic Drive-In, Westar Energy, Dr. Steve Chapman, Lee's Cooling and Heating, Shanks Oil, Great Plains Credit Union, Teresa's Cookies, McDonald's and Heaven's Angels

**Queen Neelah Will Receive:**

A Crown, a rose bouquet, a 16 X 20 framed portrait, a \$150 Gift Card, a \$100 gift certificate, a bracelet with matching earrings, a Shellac manicure, a mini ipad, camera, designer suitcase, designer backpack, designer make up bag, flat screen television, a dorm refrigerator, a one month gym membership, a graduation cake, a gift basket, candle, use of a new car and \$50 gas card, 1 dozen cookies, 250 minutes of tanning

**First Runner-Up Will Receive:**

A \$75 gift card, a \$50 gift certificate, \$25 gas card, designer travel bag, designer make up bag, camera, a flat screen television, dorm refrigerator, a graduation cake, a hair product gift basket, candle, 1 dozen cookies

### Second Runner-Up Will Receive:

A \$50 gift card, a \$50 gift certificate, \$25 gas card, designer backpack, designer make up bag, a flat screen television, a graduation cake, candle, 1 dozen cookies

**Queen and Runner Up Gift Sponsors Are:**

DJ's Photography, Goody's, Cantrell's Fine Jewelry, Mike Moore Electric,  
Bayberry, Romans Motor Company, Twigs, Laurel Street Bakery,  
Magnolia Home & Health, Kirk Wright State Farm Insurance,  
Creative Concepts, Great Plains Credit Union, Sandbagger Golf & Turf,  
Health for Life by Mercy, Heckman and Associates, Prizms, Tropical Tan, Teresa's Cookies,  
Independence Daily Reporter, Schabel's TV and Woods Lumber





# 2013 Neewollah Entertainment

## Professional Show

### James Wesley with Opening Act Kyndon Oakes

**Saturday, October 26**

**7 p.m.**

**Memorial Hall**

"I've always been a big believer in tradition," declares James Wesley. "A lot of the old ways are the best ways: family, God, treating people right, doing what you're supposed to do. I think it's time to come back to what's real. That's what country music is about."

James Wesley puts those core values into his music with a whiskey-smooth voice and a timelessly winning way with a great country song. Wesley sings directly to real people about real things that profoundly affect real lives—and from his small-town upbringing to his blue-collar work ethic, he has a deep understanding of what those folks are longing to hear.

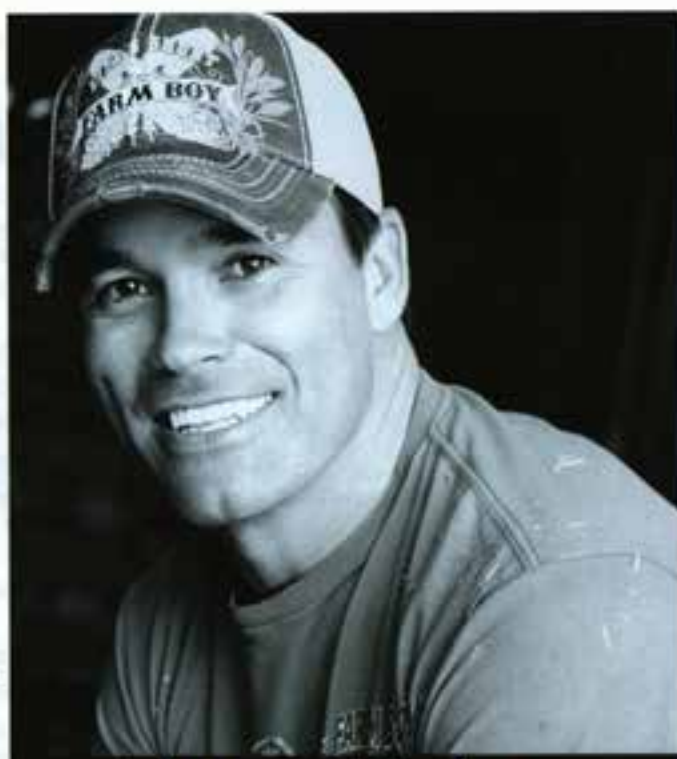
Wesley grew up in tiny Mound Valley, a community of about 200 people in Southeastern Kansas. He first discovered country music via his grandmother's record collection, which included heaping helpings of classic crooners like Marty Robbins, George Jones and Ray Price. "We'd go over there on the weekends," he recalls. "She'd have the console set up and the records stacked up and we'd listen to them as they dropped. Those guys back then, they could sing. I thought, 'That's what I want to do.'"

By his late teens he was singing in local nightclubs and beginning to think about making music his life. "I'd sit in my bedroom and stare out of the window and dream of being out there, getting to see the world," he remembers. His first move in that direction was to Eureka Springs, Arkansas, where he performed in a nightly music and variety show.

There he met his wife, Mindee, with whom he now has two young children—and finally set his sights on Nashville. "I could have stayed in Eureka Springs for the rest of my life, but I just had to chase the dream," he says. "I had to follow my gut."

He and Mindee sold their house and almost everything in it, rented a moving truck and headed for Music City. Once there, Wesley took a construction job to make ends meet and began learning the ropes of the Nashville music business. He met hit songwriter Rodney Clawson and producer Dan Frizzell, and the three began recording together. Their work caught the attention of Broken Bow Records, which signed Wesley in December and quickly released the very first song on his original demo, "Jackson Hole," as his debut single. The tune (penned by Clawson and Monty Criswell) immediately began racing up the charts, driven by listeners who loved its vivid story of fleeting love in a snowy setting. "Jackson Hole" offered fans an upfront introduction to the more vulnerable aspects of Wesley's personality. "Growing up with three sisters, I've got a sensitive side too," he says with a smile. "But I'm proud that I have that side, that I'm not callous. The only thing calloused about me is my hands."

The breakout success of "Jackson Hole" instantly validated the enormous risk Wesley took in uprooting his family from Eureka Springs for an uncertain future in Nashville was worth it. "My family has seen all the ups and downs," he says. "There's been a lot of hard work. There's been times it wasn't easy, and they've been there the whole time. They're great." It also meant that Wesley's days of construction work were over. "Thank God I get to put the hammer down, at least for a while," he says with a laugh. "It's nice to be able to do what I love to do."



**James Wesley**

NEEWOLLAH 2013



# 2013 Neewollah Entertainment



**Kyndon Oakes**

## Professional Show Opening Act Kyndon Oakes

For a guy who didn't start playing guitar until age 18, Kyndon Oakes looks and sounds like an artist and songwriter who's been singing and playing his entire life.

That's a rare gift, one that shows the natural ability, incredible work ethic, and competitive nature of this former 3-sport star from Independence, Kansas who also just happens to look like a movie star.

In a country radio format with an overwhelmingly female audience, that's always a good thing. So is Kyndon's ability to write and sing radio-friendly country songs such as the new rocking country anthem "Drive" or the romantic "Boardwalk."

One of Oakes's frequent co-writers is Susie Brown of the breakout Warner Nashville star duo The Janedear Girls.

"Independence had a small-town feel. It has maybe 9,000 people," Kyndon says of his hometown in a September telephone interview. "Everyone in my family is in banking except me. I loved hunting, fishing, and playing sports."

Singing was another passion for Kyndon, who received scholarship offers for baseball, football, and choir out of high school. Several Ivy League schools expressed interest for the true student-athlete.

Anyone who hears Kyndon sing country knows that that is where his heart lies. Some fans liken his style to McGraw in the soulful country vocals, others to Keith Urban as a songwriting influence for the natural guitar-based drive of his songs, but in point of fact Kyndon Oakes is very much his own musical man.

After a couple years playing college baseball and studying exercise science and personal training in Kansas, he moved to Pueblo, Colorado, where his college football career ended with a broken ankle.

His natural business sense kicked in as he began playing clubs in Colorado and building a local following. But his dreams by then were focused firmly on Music Row.

Oakes relocated to Nashville three years ago, and to say he has hit the ground running would be an understatement. First of all, he continued his education at Lipscomb University, all the while developing his craft and passion for songwriting.

"I love songwriting," Kyndon tells us. "It's just the best way to express your feelings. My writing has significantly changed since I came to Nashville. Before then, I didn't understand writing. Now I try to play out as much as I can and have become so much more comfortable, and I'm surrounding myself with amazing people."

Susie Brown is one of those. So is frequent co-writer and guitarist Mark Vikingstad. He has also recently co-written with Josh Gracin, the former U.S. Marine and American Idol finalist who burst onto the country scene with the No. 1 Billboard single "Nothin' To Lose" in 2004.

So as with everything else in his life and career, Kyndon Oakes loves making a lot of exciting stuff happen in a short period of time. Now that he's in Nashville, he's at last found the perfect opportunity to grow his music and his writing. And once country radio gets hold of songs like "Drive" and "Weather Man," don't be surprised to see a couple million country fans become Kyndon Oakes fans at the drop of a hat.



# 2013 Neewollah Entertainment



## **Tara Elisha – Wednesday, Oct. 24 • 8 p.m. • Bandstand**

Tara Elisha started out as a solo rock artist writing and performing her own music. With a Master's degree in music, she applies some of the structure from her formal music education but then fractures that formality presenting her audience with a melodic voice surrounded by heavy electric guitar, bass, drums, synthesizer, and exotic instrumental sounds.

## **Piper Leigh and the Smoking Section – Thursday, Oct. 24 • 8:15 p.m. • Bandstand**

Piper Leigh & The Smokin' Section will take you on a ride. Jumping from Blues to Bluegrass to Country to Motown, this group is tasteful and grounded in the groove. Piper Leigh and Jim Sanders, lead guitarist, have played music together for over 13 years! Piper is a Winfield, Kansas, native.



## **Scrappy's Attic – Friday, Oct. 25 • 9 p.m. • Bandstand**

Indie Rock band Scrappy's Attic formed in Lawrence, Kansas, in the Fall of 2012. Founder Jeff Tildes (vocals/guitar) decided to branch out from his solo acoustic act and revamped Scrappy's Attic with Jon Dillinger (bass) to form this new rock sound. With the benefit of full on, in your face, rock n' roll live performances, Jeff's acoustic act was transformed into the new revised Scrappy's Attic.



Drawing upon a wide range of influential artists such as Buckcherry, Guns N' Roses, Green Day, Muse, Foo Fighters and Stone Temple Pilots, the band looks forward to releasing its debut EP in the Fall of 2013 of its own original material.

## **[cmd] – Friday, Oct. 25 • 10:15 p.m. • Bandstand**

Hailing from the southeast corner of Kansas, [cmd] has earned a reputation for performing tight, energetic live shows. The four musicians: Spencer Smith, TJ (The Brain) Sutton, (Rattlesnake) Jake Lyon, and (thesystem) Zachary Lyon; dish out your favorite rock tunes from the 90's to today. They've been known to throw in some blasts from the past, as well. This is spiced up with a sprinkling of their original melodic, extemporaneous brand of post rock/metal. [cmd] stands apart from other area rock acts with its attention to vocal harmonies, precise playing, and courteous professionalism. The band appreciates every audience member and every venue that is gracious enough to have it perform.



## **Brain Damage – Saturday, Oct. 26 • 8 p.m. • Bandstand**

Brain Damage, a tribute to Pink Floyd, formed in 2010 and is based out of Kansas City. The members of the band were drawn together by the mutual admiration(obsession) with Pink Floyd. They could think of no better homage to the world's greatest band than to recreate their music. The band strives to recreate Pink Floyd's concert experience and they are constantly adding elements to improve the overall show.





# 2013 Marching Band Competition



Once again this year, Shulthis Stadium will be crowded to overflowing and alive with the sound of marching music. Field competition for the marching festival will begin at 1:30 p.m. Saturday afternoon at Shulthis Stadium for approximately 20-25 marching bands from Kansas and Missouri. The competition was started in 1978 by band director, Don Farthing, along with I.H.S. Band Boosters. Since the event was first begun, the festival has quadrupled in size. Many of the bands march in the Grand Parade so they will be eligible to participate in the Marching Band Competition. The Independence High School Band Boosters will operate a concession stand throughout the afternoon. The public is invited to attend the festival, free of admission charge.



## Marching Band Festival Committee

**Front Row:** Christina Evans, Taylor Goodman, Sara Wilson

**Back Row:** Bailey Lewman, David Dufur (co-chair), Michelle Dixon (co-chair)

**Not Pictured:** Dede Metcalf, Marla Dufur, Chantel Lewman, Kim Johnson, Kyle Dixon

## Marching Band Competition

**Saturday,  
October 26**

**1:30 p.m.  
Shulthis Stadium  
Kayo Emmot Field**

## Jerry and Etta Shanks SHANKS OIL COMPANY

**Phone: (620) 331-4670 (800) 999-5871**

**Box 351 1357 South Tenth**

**Independence, KS 67301**

**Service Since 1970**



## Earth Care

**Products, Inc.  
Independence, KS**

PH: 800-231-0000  
FAX: 800-231-0000  
ecpisystems.com



**Socio-Economic Optimization of Energy and Environment**



# Doo Dah Parade/Kiddie Parade

## Doo Dah Parade –

### “What Exactly Is It That You Doo Dah?”

**Thursday, October 24 • 6 p.m.**

The Doo Dah Parade is the adult only event of Neewollah, participants must be 18 or over. This parade offers the young at heart the chance to participate and show off their creative side with a theme that is typically consistent with the chosen theme for Neewollah each year. The Mardi Gras-type parade down Penn Avenue starts in front of Memorial Hall and has no particular organization. A King and Queen Doo Dah are selected each year to preside over the parade of rowdies that is liberally sprinkled with a variety of odd drill teams, bearded beauties and unusual creatures.

This year “What Exactly Is It That You Doo Dah?” is the theme, and organizers encourage adults to come on down and show everyone exactly what they Doo Dah! Come join us for loads of laughs at 6 p.m. on Thursday, October 24, 2013.



#### **Doo Dah Parade Committee**

**Front Row:** Billie Strickland, Travis Kolb, Dustin Cain, David Bryant

**Back Row:** Andrew Demo (chair), Trevor Bruening, Brett Shaw, Geoffrey Corle

## Kiddie Parade

**Friday • October 25 • 4 p.m.**

The Kiddie Parade participants gather in front of Memorial Hall and join their category. Parents often walk with their younger children. This is an opportunity for young parents and their children to see and be seen. Many come home for the week end festivities and connect with friends after the Kiddie Parade. Over 900 children, area bands and numerous kiddie floats participate in this parade. The staff of USD 446 donates time and energy to make the parade run smoothly.



#### **Kiddie Parade Committee**

Debbie Toomey, Brad Carroll

NEEWOH LAH 2013



# 2013 Neewollah Grand Parade

**Saturday • October 26**

**11 a.m.**

The parade goers will all wait in anticipation of the Big Boom! that lets everyone know the Neewollah 2013 Grand Parade is about to begin. All eyes, young and old will be scanning the busy street before them trying to take it all in.

The two hour long Grand Parade will start at the corner of Penn and Chestnut. It proceeds from Memorial Hall south on Main St. east to Sixth St., south one block to Maple where it turns west to Ninth St. The final leg travels north on Ninth St. ending just short of the Independence Middle School. The Grand Parade is exceedingly well attended. Parade goers set up chairs on the front row in the wee hours of the morning on parade day. As they wait with great anticipation for the canon to go off, sounding a loud boom at 11 a.m. The crowd will be five deep in many places along the route. There are free street acts, the carnival and food concessions along Penn Ave. both before and after the Neewollah Grand Parade.



## Grand Parade Committee

**Front Row:** Travis Kolb, Joe Barker, Cole Hoffmeister

**Back Row:** Andrew Demo, Sean Clapp (co-chair), Lance Chickadonz (co-chair)

**Not Pictured:** Dean Clarkson, David Ebert, Chad Johnson, Keith Lanning, Kurt Wright, Brian Yakshaw

## Grand Parade Route



### LEGEND

- ★ Carnival
- Bandstand
- X Info. Booth
- ✓ Middle School
- ▼ Memorial Hall

## FLIPST&T

Power Tumbling

Trampoline

Double Mini Trampoline

Cheer

1581 S. 10th, Independence, Kansas  
Inflatable Rentals, Birthday Parties and more!

620-577-4033  
www.flipstandt.com

## CLASS

ASSISTING INDIVIDUALS WITH DISABILITIES ALONG LIFE'S JOURNEY

800.479.0259 • classltd.org



NEEWOLLAH 2013



# 2012 Grand Parade Float Winners



**Sweepstakes Trophy:**  
**Woods Lumber**



**Grand Prize:**  
**Standard Motors**



**Judge's Trophy:**  
**First National Bank**



**Queen's Trophy:**  
**Bradford Place**



**Mayor's Trophy:**  
**First Federal Savings & Loan**



**Grand Marshal's Trophy:**  
**Regal Estate**



**Generalissimo's Trophy:**  
**Coffeyville Regional Medical**



**Governor's Trophy:**  
**Cherryvale Chamber of Commerce**

NEEKO H 2012



# 2013 Neewollah Grand Parade Marshal



**Grand Parade  
Marshal –  
Don Farthing**

Don Farthing, this year's Grand Parade Marshal, first became involved with Neewollah in 1977 upon moving to Independence. His Independence High School Band marched in the Grand Parade and seizing on an opportunity, Don initiated the first Neewollah Marching Festival the next year. From a first year number of 7 participating bands, the festival has become one of the premier marching festivals in the region with 20 to 25 bands competing each year.

Farthing, although not a native to Independence has deep family ties to the area as his grandparents on both sides of the family met and married within miles of Independence. Don is married and he and his wife, Carole, a retired math educator, have two adult children, Lynn Reddy and Amy Chesser, six grandchildren and two great-grandsons.

Farthing served as generalissimo for Neewollah in 2004 and was a member of the Neewollah Board for nine years. His other Neewollah involvements includes directing nine Neewollah Musical orchestras, Co-Producing "Beauty and the Beast", and he recently appeared in the "MusicMan." His wife, Carole, has been active over the years as one of the famed Ticket Queens for Neewollah. She has also participated in some of the Neewollah musicals.

He taught for 35 years in Baldwin City, Ulysses, Independence, and Dodge City. Bands under his direction regularly earned top honors at festivals and appeared four times in concert at the KMEA in-service workshop. Don also directed several Kansas Lions Bands

and toured throughout the USA and Europe with those ensembles. Mr. Farthing regularly judges at music festivals and clinics bands throughout the area.

As a music educator, Don has been very active within his profession. He has held offices in Kansas Music Educators Association, and is a charter member of the Kansas Bandmasters Association which just celebrated its 40th anniversary. He has been president of the organization and in 2009 was awarded "Kansas Outstanding Band Director Award" for his service to Kansas Bands.

Don continues to be active with the Mid Continent Community Band each summer, directing and playing in the group. He also loves to bike and work in the rose garden.

Farthing is a graduate of Northeastern State University, Emporia State University and Pittsburg State University with degrees from each institution.

## King & Queen Doo Dah

Jeff and Lori Shaw love the excitement and festivities of Neewollah! Both have participated in numerous Neewollah musicals but their favorite roles were zany pirates of "Peter Pan." Jeff has served on Neewollah committees including chair of Set Production, Logo Contest, and Special Exhibits. Jeff is a signal maintainer for Union Pacific Railroad.

Lori is the executive director of the Independence Community College Foundation. Lori chaired this year's Neewollah Logo Contest Committee along with several past Logo contests and Picture Yourself at Neewollah. She has also served on other Neewollah committees including Costume, Set Production, Brochure, and Website. Both are charter members of Independence Thespian Society Organization (ITSO) and active with Montgomery County Theater. They are parents of Jamie, Lindsay and Brett as well as proud grandparents of Cash and Corbyn. Keep calm and Doo Dah on!



**King & Queen Doo Dah –  
Lori & Jeff Shaw**

NEEWOLLAH 2013



# 2013 Neewollah Fun Run

USA Track and Field

## Certified 5K and 10K Runs and 1 mile Fun Run/Walk

Saturday, October 19 • Riverside Park Oval

Registration 7-8:15 a.m.

5K & 10K Run 8:30 a.m.

1 Mile Fun Run/Walk

Registration 8-9:30 a.m. Race 10 a.m.

The Neewollah Run is back for its 25th edition. This year's Certified 5K and 10K run will again be electronically chipped time. The 5K and 10K will be followed by the 1 Mile Fun Run/Walk that includes hundreds of children and adults participating. What better way is there to kick off Neewollah than a run through beautiful Riverside Park? Come join us and see how "It's Alive!" Awards will be presented at 11 a.m. on the bandstand at the chili cook-off.



**Neewollah Run Committee**

Debbie Creekmore (co-chair), Jay Jones (co-chair)

Not Pictured: Rickenia Botts

NEEWOLLAH 2013

### First in Checking! First in Loans!

Independence, Coffeyville,  
Neodesha, Pittsburg

[www.firstfederalsl.com](http://www.firstfederalsl.com)

800-455-0744



**First Federal**

**SAYERS**  
ACE HARDWARE

**SAYERS ACE HARDWARE**

314 N. Penn • Independence

(620) 331-1690



We love our flowers so much we wet our plants!

Open Mid Sept-Mid Oct & Mid March-Mid June

1734 N. 24<sup>th</sup> St. (620) 330-3855  
Independence, between Oak & Taylor



*The Medicine Shoppe*  
National Prescription Centers

Carl G. Gyll, R.Ph.

400 N. Penn Ave.  
Independence, KS 67301

331-0036



# 2013 Chili Cook-Off & Dessert Contest

## 10th Annual Chili Cook-Off & Dessert Contest

### Great Pumpkin Decorating Contest

Saturday, October 19 • Riverside Park Oval

Activities begin at 10 a.m. and last until 2 p.m.

Frankly Frankenstein, you can't beat the ghoulish good times you and your family will have at the "Monster Mash Chili Bash 2013"! The 10th Annual Chili Cook Off and Dessert Contest features yummy chili and creepy confections from the "Ghoulish Goodies and Terrifying Treats" dessert tent all available for public sampling. There will also be salsas to sample from the 1st Annual Oh...So Scary Salsa Competition. If you're thirsty why not stop at the "Mad Scientist's Laboratory" and try a Frankenstein Fizz, a Cauldron Concoction or a cup of BOO Brew. Children can enter the "Monster Mash Chili Bash" coloring contest and these will be displayed the day of the event. Little monsters and goblins can enjoy the Kid's Corner Fang-tastically Fun Activities such as face painting, inflatables, the Frankenstein Walk, the Haunted Hop, the Witch's Cauldron Toss and Igor's Eyeball Relay. Be one of the 10 brave enough to take the "Eat My Brains" challenge...we dare you!

The Great Pumpkin Contest, one of Neewollah's long-standing family fun activities is taking on a few changes for 2013. At the Great Pumpkin Decorating Station, little artists can create a pumpkin work of art and then take it home (for ages up to 13). For the more serious artists (14 and older), the all new Great Pumpkin Carving Contest calls for pumpkin or gourd carving artists to showcase their masterpieces big or little...just be able to transport your entry. Please visit the Neewollah website for further details and rules for any of these events. With all of the great food and family-fun activities the 2013 Chili Cook Off and Dessert Contest has to offer it is easy to say "It's Alive!" with Neewollah excitement.



#### Chili Cook-Off Committee

**Front Row:** Kim Pinkerton (co-chair), Jayne Estes, Jen Rutledge, Valerie Smith, Kathy Sullivan, Carey Chism, Stacie Clarkson (co-chair)

**Middle Row:** Angie Carr, Anne Bertie, Karen Morrison, Dayna O'Kane, Cathy Beaver, Valerie Davis, Shannon Oakes

**Back Row:** Rachel Jamison, Matt Brumley, Tyson Oakes, Courtney Clifton

**Not Pictured:** Melanie Merrick, David Merrick, Whitney Chism, Dana Froebe, Doug Froebe, Zoedy Schnurbush, Christy Meyers, Dennis Pinkerton, Dean Clarkson, Katie Clarkson, Jason Rutledge, Jennifer Shaffer, Levi Shaffer, Jordan Jamison, Tracy Ringle, Todd Ringle, Benji Chism, Pili Barker, Joe Barker, Hali Beaver, Tabatha Snodgrass, Allison Littleford, Kyle Davis, Lacy King, Mickey King, Stan Sullivan, Rick Mott, Sarah Boyer, LaRonna Bollig, Brandi Vowel, Cheryl Sparks, Keri Stevens, David Bales, Amy Bales, Julie Bruington, Melissa Borvets



# Medallion Hunt/Carnival/Arts & Crafts Fair

## Neewollah Medallion Hunt

**Saturday, October 19**

**Riverside Park Oval • 1 p.m.**

The 2013 Medallion Hunt will kick off in conjunction with the annual Chili Cook-Off at the Riverside Park Oval on Saturday, October 19 at 1 p.m.

The Medallion is hidden somewhere within the city limits of Independence on public property and clues are issued each day regarding the location of the medallion. The prize offered this year to the finder of the medallion will be \$500. If the winner is not wearing this year's Neewollah button the prize will be reduced to \$250. A new clue will be released at 3:00 p.m. each day at the Neewollah Headquarters located at 114 North Penn Avenue, in the Independence Daily Reporter and on the Neewollah website. A complete list of the rules is available at the website, [www.neewollah.com](http://www.neewollah.com).



**Medallion Hunt Committee**

Dennis Greenhaw (chair)

## Carnival

The Neewollah Carnival is brought to you by Ottaway Amusements. One of the favorites in the Neewollah tradition, the carnival is a plethora of glittering lights and delighted screams. The Carnival is fun for the whole family; the adults seem to enjoy the rides just as much or more than the kids do! The flashing lights and sounds of the Midway leak out even onto the bandstand.

### Carnival Schedule:

Wednesday, October 24, 5 p.m.-10 p.m.

Thursday, October 25, 5 p.m.-10 p.m.

Friday, October 26, 3 p.m.-10 p.m.

Saturday, October 27, 10 a.m.-10 p.m.

Wristbands (\$22) will be offered during 5 different time periods and will not be accepted outside the specific time period for which they were purchased. Those time periods are:

### Carnival Ticket Prices:

Single Ticket - \$3.25

Family Pack 10 tickets - \$25.00

Super Saver 30 tickets - \$65.00

Wrist Band \$22.00

Wednesday, October 23, 5 p.m. - 10 p.m.

Thursday, October 24, 5 p.m. - 10 p.m.

Friday, October 25, 3 p.m. - 10 p.m.

Saturday, October 26, 10 a.m. - 5 p.m.

Saturday, October 26, 5 p.m. - 10 p.m.



**Carnival Committee**

Jim Clubine (chair)

## Arts & Craft Fair

**Saturday, October 19**

**8 a.m. to 6 p.m.**

The Arts & Crafts show has been a mainstay of the Neewollah Festival. Over the years, bringing in high quality hand crafted items has been a priority. This is a great time to shop for Christmas. Unusual and distinctive crafts, framed artwork and photos abound with 30-35 booths. This year they can be found in front of the VFW in the 100 block on East Myrtle.



**Arts & Crafts Committee**

Sharla Mangan (co-chair), Sharon Moses (chair),  
Kim Johnson

NEEWOLLAH 2013



# Food Vendors/Neewollah Committees

## Food Vendors

Each year the Food Vendors committee starts early contacting interested parties to insure Neewollah goes find a great mix of good food as they enjoy downtown Independence. Concession Stands are open Wednesday through Saturday and most concessions are open late morning and stay open as late as 10 p.m. or until they run out of food supplies each night. The cinnamon roll stand has been coming to Neewollah for over 30 years. It opens early Wednesday morning and stays open 24 hours a day throughout the festival. A wide variety of food offerings include Indian tacos, Philly steak sandwiches, funnel cakes, Polish sausages, fresh lemonade, fried pickles, toasted ravioli, roasted corn, barbequed meats, smoked turkey legs, apple fritters, grilled cheese sandwiches, grinder sandwiches, pineapple whip and much much more. In other words there is something for everyone.



### Food Vendors Committee

Front Row: Shawn Wallis, Fred Meier

Back Row: Dan Reynolds (co-chair), Cole Hoffmeister, Jeff Chubb (co-chair)



### Generalissimo Scrapbook Committee

Sabrina Overfield (chair), Stacey Yakshaw



### Social Media Committee

Front Row: Lori Shaw, Marci Horning

Back Row: Lori Wesselowski



### Special Events Committee

Drew Demo



### Environmental Engineer & Safety Committee

Marty Reichenberger



### Beacon Committee

Beth Kelly (co-chair), Jim Kelly (co-chair)



# Neewollah Committees



## Sponsorship Committee

Front Row: Jay Jones

Back Row: Denise Hines (co-chair), Stacey Yakshaw (co-chair), Janet Demo



## Street Acts (Bandstand) Committee

Erin Connors, Donnie Fuqua (chair), Tracy Connors

Not Pictured: Kim Hamlin, John Hamlin, Rus VanRoyen



## Website Committee

Front Row: Sarah Coder, Marci Horning (co-chair)

Back Row: Leslie Coder (co-chair), Mary Thompson-O'Rourke



## Kick-Off Party Committee

Janet Demo (co-chair), Lori Wesselowski (co-chair), Ashley Brooke Drake



## Advertising & Publicity Committee

Denise Hines (advertising chair), Beth Kelly (publicity chair), Jen Rutledge



## Program Book Committee

Leseley Simpson (co-chair), Jackie Chandler (co-chair)



# Neewollah Committees/Logo Contest



## Brochure Distribution

Tom Posch (chair), Denise Steinle  
 Not Pictured: Mary Ellen Stafford,  
 Don Cushing



## Logo Committee

Front Row: Mary Kadel, Brett Shaw, Lori Shaw (chair), Jeff Shaw, Mary Boulanger  
 Middle Row: Sandy Annable, Andrew Demo, Terri Barbara, Janet Demo (chair),  
 Pam Passauer, Drew Demo  
 Back Row: Larry Annable, Sean Clapp, David Bryant, Travis Kolb

## 2013 Neewollah Logo Designer

The Neewollah Logo Committee is excited to announce this year's winner of the 2013 Neewollah Logo Contest is Shelly James of Independence, Kansas. James' friendly Frankenstein captures the spirit of this year's theme, "It's Alive", and will serve as the official logo of the 2013 Neewollah Festival. It will be displayed on advertisements, banners, t-shirts, programs and official Neewollah merchandise. As the winner Shelly will receive a \$100.00 cash prize.

Born and raised in Independence, James has enjoyed Neewollah every year. A graduate of Independence High School, she then attended and graduated from Independence Community College in 1982 and Kansas State University in 1984. Shelly has been employed by Standard Motor Products for the past twenty years. She and her husband, George, have three grown children and two grandchildren, of which they are very proud. "My pride and joy is my collection of Neewollah memorabilia," comments James. "And this year it is such an honor to have my logo design chosen."



## 2013 Neewollah Logo Designer:

Shelly James with 2013 Generalissimo Jeff Gettler

The Neewollah Logo Contest is held each spring after the Generalissimo has announced the theme for the upcoming festival. Entries are sought through the local newspaper. After judges select the winner, the overall composition of the entry may be fine tuned to fit on the Neewollah button and to fit all other Neewollah needs.



# 2013 Neewollah Supporters

**Independence Daily Reporter**  
Area's Largest Newspaper  
Proud Supporter of Neewollah  
(620) 331-3550

**Great Plains Federal  
Credit Union**  
"People Helping People"  
123 E. Main • Independence  
Drive Thru: 200 E. Main  
(620) 331-4060

**O'Malley Equipment Co.**  
(620) 331-2350  
Highway 75 & 160 • Independence  
"Neewollah Participation Makes  
You All Winners!"

**Down Home Family  
Restaurant**  
"The Best Fried Chicken  
in S.E. Kansas"  
1515 N. Penn Ave.  
Independence  
(620) 330-6999

**Borovetz Retail Liquor**  
John Borovetz, Owner/Manager  
120 N. 24th • Independence  
(620) 331-2160

**Penmac Staffing**  
111 W. Main • Independence  
(620) 331-7600

**Kelly Law Office**  
William J. Kelly, Attorney At Law  
113 S. 8th • Independence  
(620) 331-2071

**Heckman &  
Associates, P.A. Architects**  
107 1/2 N. Penn • Independence  
(620) 331-6171

**Westar Energy, Inc.**  
"Doing Whatever It Takes to Keep  
the Lights On"

**Four County Mental  
Health Center**  
Serving Chautauqua, Elk,  
Montgomery & Wilson Counties  
Independence • Coffeyville  
(620) 331-1748 • (620) 251-8180  
www.fourcounty.com

**Cynthia Sherwood, D.D.S.**  
308 N. 6th • Independence  
(620) 331-4499

**Family Podiatry, P.A.**  
Dr. Harold J. Sauder  
Dr. Barry Wesselowski  
Dr. Jeffrey D. Hogge  
209 N. 6th • Independence  
(620) 331-1840

**Beurskens Family Dentistry**  
Jennifer Beurskens, D.D.S.  
117 N. Penn • Independence  
(620) 331-4859

**Greg Kelley, D.D.S.**  
109 W. Main • Independence  
(620) 331-3180

**Null Chiropractic, LLC**  
Dr. Scott A. Null  
Dr. Audrey Tullis  
204 E. Chestnut • Independence  
(620) 331-1520

**Yerkes & Michels CPA LLC**  
J. Dan Carroll, CPA  
Carmen Duroni, CPA  
Randy Hoffman  
208 E. Laurel St. • Independence  
(620) 331-4600

**Emert, Chubb & Gettler, LLC**  
**Attorneys at Law**  
Timothy R. Emert • Jeffrey A. Chubb  
Jeffrey W. Gettler • Daniel M. Reynolds  
Cole A. Hoffmeister  
304 N. 6th • Independence  
(620) 331-1800

**Mike Moore Electric, Inc.**  
Service for all your  
electrical needs  
3456 CR 3900 • Independence  
(620) 331-8906

**Computer Generation**  
313 N. Penn  
Independence, KS  
(620) 331-8903

**Derailed Commodity**  
3102 W. Main  
Independence, KS  
(620) 331-6920

**Steve Chapman, D.C.**  
720 W. Laurel • Independence  
(620) 331-5240

**Barta Animal Hospital**  
**The Pet Shop**  
Richard Barta  
Kevin Cooper • Katie Klenda  
(620) 331-6327 • (620) 331-7452

**CMC Recycling**  
John Fauvergue  
501 S. 20th  
620-331-1710

**Webb Family Funeral Service**  
1475 S. 10th  
Independence, KS  
620-331-3500  
www.webbfamilyfuneralservice.com  
LOCALLY OWNED & OPERATED

NEEWOLLAH 2013



# Past Neewollah Generalissimos & Queens

<u>Past Generalissimos</u>	<u>Past Queens</u>
1919 Thurman Hill	
1920 O.E. McAnulty	Ella Jane Brinkley
1921 O.E. McAnulty	Ella Jane Brinkley
1922 John Baden	Orphelia Pruitt
1923 John Baden	Florence Smith
1924	Helen Jones
1925	Lola McDaniel
1926 O.E. McAnulty	Catherine Cates
1927 O.E. McAnulty	Babs Carroll
1928 O.E. McAnulty	Alice May Austin
1929 O.E. McAnulty	Elizabeth Cowman
1930 O.E. McAnulty	Bea St. Helens
No Neewollah 1931-1934 due to the Great Depression	
1935	Louise Ransdall
No Neewollah 1936-1947 due to World War II	
1948 Bill Wagner	Dorothy Heckman
1949 Emmett Wilson	JoAnn Jacobs
No Neewollah 1950-1957 due to lack of financial support	
1958 Jim Halsey	Neola Hamsher
1959 Bob Wohltman	Sylvia McCalla
1960 Jerry Webb	Norma Day
1961 Don Dancer	Phyllis Cinnoto
1962 Bill Woods	Kristin Utz
1963 Duane Doll	Betsy Gibson
1964 Bill Woods	Karen Schaub
1965 Jim Halsey	Gay Barnard
1966 Fred Wilkin	Rosemary Sicks
1967 E.C. Simmons	Pat Yerkes
1968 Wayne Reed	Diane Talley
1969 G. Burks Sherwood	Terri Boorigie
1970 Bob Schneider	Nancy Reid
1971 Bill Cook	Diane David
1972 Jerry Webb	Ruth Pittman
1973 Richard Shaver	Laurie Dilorio
1974 Stan Lewis	Belinda Boys
1975 Paul Viets	Janet Washburn
1976 Bill Mason	Stephanie Cook

<u>Past Generalissimos</u>	<u>Past Queens</u>
1977 Kathryn Bruening	Susan Scovel
1978 Roger Leeseberg	Staci Pollock
1979 Stewart Crow	Lisa Swearingen
1980 Jerry Webb	Beth Maxwell
1981 Don Dancer	Yvette Carvalho
1982 Karen Reeder	Jill Singleton
1983 Lowell Baker	Gail Moore
1984 Stewart Crow	Tammy Pasternak
1985 Pat Springer	Jeannine Bailey
1986 Jack Ashcraft	Missy Housel
1987 Tim Emert	Shelly Nelson
1988 Virginia Kelly	Kaki Borklund
1989 Steve DeFever	Kara Woods
1990 Paul Oakleaf	Julie Lair
1991 Lorne Schlatter	Keri Kruse
1992 David Torbett	April Hill
1993 Steve Wilkin	Laura Henrichs
1994 Mike Flood	Kelly Springer
1995 Larry Pendleton	Tara Kemp
1996 Ray Rothgeb	Christy VanFossen
1997 Gregg Webster	Kelly O'Malley
1998 Beth Chaney	Andrea Bailey
1999 Butch Holum	Jordan Paugh
2000 Vanessa Dennis	Uma Patel
2001 Grant Sherwood	Tara Olson
2002 Val DeFever	Ramie Browning
2003 Jeff Chubb	Audrey Gross
2004 Don Farthing	Aubrey Heckman
2005 Ann Crow	Lisa Erbe
2006 Lea Shepard	Kelly Whitson
2007 Drew Demo	Morgan Fox
2008 Marty Reichenberger	Brooke Rollison
2009 Sean Clapp	Brittany Meyer
2010 Fred Meier	Kelby McGrath
2011 Melissa Small	Emely Flores Hendrick
2012 Karen Truner	Jackie Newland



# Past Neewollah Musicals

Year	Musical	Director	Producer
1958	Picnic	Margaret Goheen	Fed Cinotto
1961	Annie Get Your Gun	Bobbie Gibson	Paul Bish
1962	The Music Man	Bobbie Gibson	Paul Bish
1963	Guys & Dolls	Bobbie Gibson	Paul Bish
1964	My Fair Lady	Bobbie Gibson	Paul Bish
1965	Auntie Mame	Tim Emert	Bill Wood
1966	The Sound of Music	Georgia High	Paul Bish
1967	Lil' Abner	Bobbie Gibson	Paul Bish
1968	South Pacific	Barbara Harvey	Georgia High
1969	Oliver!	Georgia High	Fred T. Wilkins
1970	Carnival!	Bobbie Gibson	Paul Bish
1971	October Happening	Phil & Juanita Atkisson	Paul Bish
1972	Fiddler on the Roof	Kenneth Burchinal	Paul Bish
1973	Hello Dolly!	Georgia High	David Torbett
1974	no local production		
1975	The King & I	Georgia High	Paul Bish & David Torbett
1976	Touring company production of Bus Stop		
1977	Anything Goes	Georgia High	Paul Bish & Jerry Webb
1978	Rodgers & Hart: A Musical Celebration	Keith Confer & Georgia High	
1979	Dracula!	Gary Mitchell	Stewart Crow
1980	The Music Man	Bobbie Gibson	Kathryn Bruening
1981	Carousel	Ray Rothgeb	Burks Sherwood & Georgia High
1982	Oklahoma!	Georgia High & Keith Confer	Tim Emert
1983	Camelot	Keith Confer	Georgia High
1984	Annie	Terry Jordan	David & Rachel Torbett
1985	No, No Nannette	Georgia High	Tim Emert
1986	The Unsinkable Molly Brown	Keith Confer	Steve Barnett & Cyndy Sherwood
1987	The Sound of Music	Georgia High	Larry Pendleton
1988	My Fair Lady	Sue Woods	Steve DeFever
1989	Mame	Ray Rothgeb	Steve Wilkins
1990	Gypsy	Kenneth Burchinal	Val DeFever
1991	Oliver!	Ray Rothgeb	Stewart Crow & Steve Wilkins
1992	Damn Yankees	Keith Confer	Larry & Glenna Pendleton
1993	Guys & Dolls	Ray Rothgeb	Stewart Crow
1994	Bye, Bye Birdie	Jill Warford	Cyndee Bishop & Judy Holyrod
1995	The Pajama Game	Keith Confer	Tim Emert & Judy Carroll
1996	The King & I	Lisa Mitchell	Steve Wilkin
1997	The Wizard of Oz	Lisa Mitchell	Vanessa Dennis & Cyndy Sherwood
1998	Peter Pan	Jill Warford	Sandy Dodson
1999	Cinderella	Debbie Tischer	Stewart Crow & Steve DeFever
2000	Hello Dolly!	Sue Woods	Stewart & Ann Crow
2001	Annie	Lisa Mitchell	Beth Chaney & Vanessa Dennis
2002	Brigadoon	Lisa Mitchell	Lea Shepard
2003	Little Shop of Horrors	Mark Frank	Vanessa Dennis & Steve Wilkins
2004	Meet Me in St. Louis	Keith Confer	Tim Emert, Judy Carroll & David Torbett
2005	Neewollah Follies	Debbie Tischer	Steve Wilkins
2006	Beauty and the Beast	Lisa Mitchell	Don Farthing
2007	Lil' Abner	Lisa Mitchell	Leslie Coder & Sandy Annable
2008	Joseph & The Amazing Technicolor Dreamcoat	Ray Rothgeb	Bob & Debbie Tischer
2009	Thoroughly Modern Millie	Lisa Mitchell Paige	Drew Demo & Leslie Coder
2010	The Music Man	Lisa Paige	Don Farthing & Sean Clapp
2011	Willy Wonka & The Chocolate Factory	Mark Frank	Ann Crow & Lisa Paige
2012	Grease	Rick Huguenin	Keith Confer & Drew Demo
2013	Young Frankenstein	Lois Lessman & Lisa Paige	Sarah Wilson & Lori Wesselowski



# 2013 Neewollah Board of Directors



## Neewollah Board of Directors

**Front Row:** Lori Wesselowski, Tom Posch, Jeff Gettler, Keith Confer, Jim Kelly

**Middle Row:** Denise Hines, Melissa Small, Lisa Paige, Stacey Yakshaw, Lisa Hugo, Janet Demo

**Back Row:** Jay Jones, Tom Schwartz, Sean Clapp (chair)

**Not Pictured:** John Hamlin

The Neewollah Board of Directors is made up of fifteen members who are elected for three year terms and can serve up to three terms. New board members are often selected based on their active involvement in the festival and the expertise they bring to the board table. These individuals often assume positions of leadership in the overall running of the festival. The Generalissimo is most likely to be a board member. He or she has a year as Generalissimo-Elect to become more fully acquainted with all the facets of the 10-day celebration before moving into command.

## Acknowledgments

Neewollah would like to take this opportunity to thank the many individuals and businesses that have contributed to the success of this year's celebration. Whether you have contributed financially, or have given of your time and talent, Neewollah and Independence thank you!

## Neewollah 2014

"Neewollah 2013 - It's Alive" has been a pleasurable experience for all of the Neewollah 2013 committees. Neewollah is an Independence tradition and preparations for next year's celebration are already in progress. Tentative dates for the 2014 festival are October 25 thru November 1, 2014. To obtain information for Neewollah 2014 send a self-addressed stamped envelope to:

## Neewollah

P.O. Box 311 • Independence, KS 67301

1-877-NEE-WOLLAH (1-877-633-9655) • [www.neewollah.com](http://www.neewollah.com)



# 2013 Neewollah Street Acts

Neewollah has always centered around a variety of free activities on the downtown streets of Independence. The Bandstand features hometown and area talent as well as entertainers with a global origin, Wednesday through Friday evenings, then all day Saturday during Neewollah week. The stage is constructed several days before it comes to life with street acts. Bales of hay are pulled out each evening for the audience to sit on although they may bring their own folding chairs.

## Retro Rockers



## Colton & Zara Band



## Brain Damage



## Midlife Crisis

## Bandstand Schedule

### Wednesday, October 23

- 6-6:45 p.m. Colton and Zara (Pop rock)
- 7 p.m. Queen Neelah and Generalissimo Jeff Gettler
- 7-7:15 p.m. IHS Band
- 7:15-7:30 p.m. IHS Drum Line
- 7:30-7:45 p.m. Neelah Debs and Escorts
- 8-9:30 p.m. Tara Elisha (Rock)

### Thursday, October 24

- 7-7:45 p.m. The French Family (Bluegrass)
- 8:15-9:45 p.m. Piper Leigh and the Smoking Section  
(Bluegrass, Blues, Rock)

### Friday, October 25

- 5:30-6:30 p.m. Midlife Crisis (80's Rock)
- 7-7:45 p.m. Back Roads Band  
(Rock, Classic R&B)
- 8:15-8:45 p.m. Caddywhompus (Rock)
- 9-9:45 p.m. Scrappy's Attic (Rock)
- 10:15-11:15 p.m. CMND (90's Rock)

### Saturday, October 26

- 1-2:30 p.m. Longshot (Country, Rock)
- 3-3:45 p.m. John Hamlin  
(Solo Classical Guitar)
- 4:15-5:45 p.m. Salty Dog (Blues, Rock)
- 6:15-7:30 p.m. Retro Rockers  
(Classic Rock and R&B)
- 8-10 p.m. Brain Damage (Pink Floyd Tribute)



Marching Band Competition • Logo Contest • Grand Parade • Street Act



**Neewollah, Inc.**

P.O. Box 311 • Independence  
(877) 633-9655 • [www.neewollah.com](http://www.neewollah.com)

Fun Run • Carnival • Young Frankenstein • Queen Neelah Contest • Music